



HANYCO
HAMOUN NYZEH CO.

DUCTILE IRON LIGHTING POLE



Beautiful, Durable, Cost-Effective





Hamoun Nyzeh (HANYCO) was established in 2006 in KASHAN City-IRAN. HANYCO is manufacturer of ductile iron pipes and fittings for water and wastewater distribution and transportation lines with about 100,000 tons/year annual capacity.

After more than 10 years of the successful production of waterline pipes and fittings, HANYCO proudly announced that this company is the first producer of ductile iron utility and lighting poles in the Middle East according to the latest International and national standards.

HANYCO uses more than at least a quarter of a century of experience and the latest technologies in the field of ductile iron pipes and fitting production to design and produce ductile iron lighting poles.



Ductile Iron Lighting Pole

Ductile Iron Lighting poles from 1 to 12m height are the newest product of HANYCO. Besides the beautiful appearance and wide range of colors, these poles are durable and suitable for harsh environments Susceptible to corrosion. The ductile cast iron lighting poles can be installed in both buried and foundation modes.



Ductile Iron Lighting Pole Advantages

- Long service life and the Usability in harsh climatic conditions due to the unique corrosion resistance of ductile iron.
- Beautiful appearance and a wide range of colors.
- Engineering design according to finite element software simulations, international standards, and performance tests.
- Easy to install and transfer (frame and body can transfer separately).
- Eco-friendly and recyclable product.
- Powerful resistance to corrosion due to Various coatings, including zinc metal coating and polyurethane paint on the pole body.
- A Seamless and uniform cylindrical shape of the body.
- Ability to install in two modes: on the foundation or buried.



1 to 12 m ductile iron lighting poles



1 to 6 m ductile iron
lighting poles



7 to 12 m ductile
iron lighting poles

Ductile iron lighting pole components

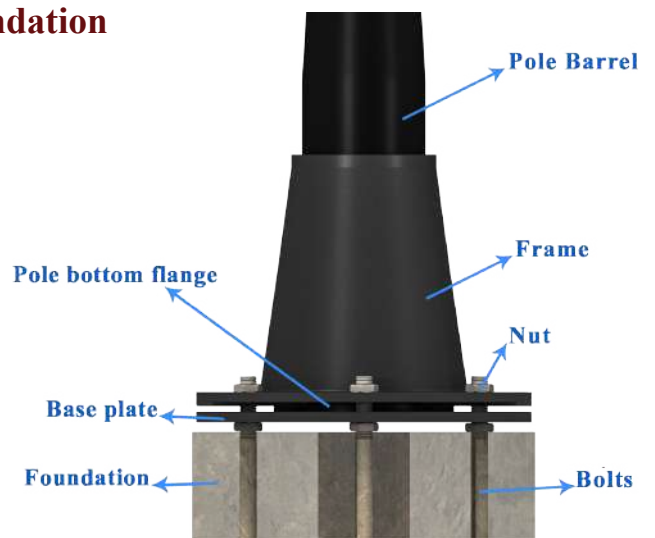


Mechanism of lighting pole installation on Foundation

Step 1: Base plate is leveled by adjustment of bottom nuts.

Step 2: bottom Flange of pole barrel located between base plate and frame.

Step 3: Top nuts and washers are tightened to level the pole barrel.



Frames

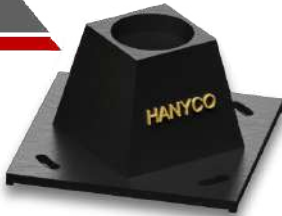
Crystal (Type 3)



Crystal (Type 2)



Crystal (Type 1)



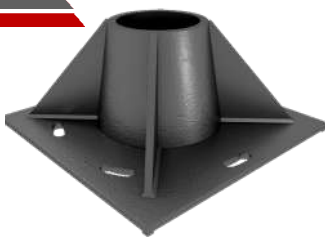
ROYAL (Type 2)



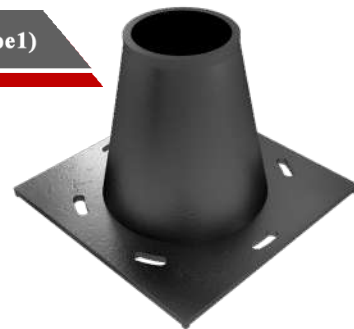
ROYAL (Type 1)



Marshal (type2)



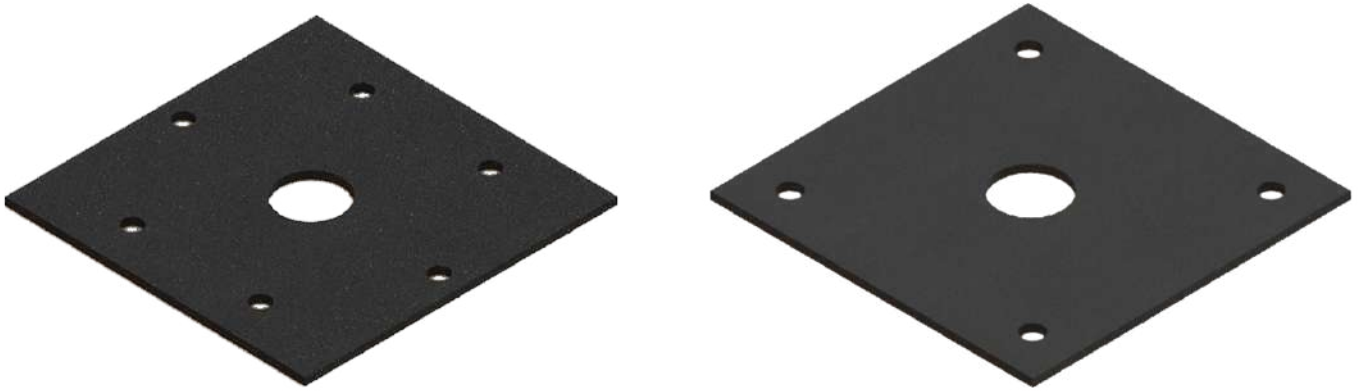
Marshal (type1)



Frame Type	Height (mm)	No. of holes	Approximate weight (Kg)	Installation plate dimensions (mm)	Suitable for
Crystal (type1)	125	4	20	400×400	1 to 3m
Crystal (type2)	257	4	25	400×400	3 to 5m
Crystal(type3)	410	4	31	400×400	4 to 6m
Marshal(type1)	150	6(4)	26	400×400	1 to 6 m
Marshal(type2)	300	6(4)	23	400×400	7 to 12m
Royal(type1&2)	900	6(4)	48	400×400	7 to 12m

Base Plate

The most important application of the Base Plate is leveling the pole also bottom flange located between base plate and frame. The Base plate can be presented with 4 or 6 holes. In addition, the dimension of the base plate can change according to the request. Customized base plates according to customer needs are available.



Door Opening

The dimension of the door opening for 1 to 6m poles is 75×200mm and it is 85×200mm for 7 to 12m poles. Three types of doors are available for lighting pole door openings. Hinged door with two type of locking segment and simple type door. A normal person cannot easily open the opening door of ductile iron lighting poles. The level of protection is IP34 for all types of door openings.



Technical information

1 to 6 pole

Height (m)	Nominal Thickness (mm)	External Diameter (mm)	Internal Diameter (mm)	Weight (Kg)	Top Cap Weight (Kg)	Frame Type	Pole Plate Dimension (mm)	dimension of the door opening (mm)
1	5	118	108	15	0.5	Crystal (Type 1) Marshall (Type 2)	400×400	200×75
2	5	118	108	27	0.5	Crystal (Type 1) Marshall (Type 2)	400×400	200×75
3	5	118	108	40	0.5	Crystal (Type 1&2) Marshall (Type 2)	400×400	200×75
4	5	118	108	53	0.5	Crystal (Type 2&3) Marshall (Type 2)	400×400	200×75
5	5	118	108	66	0.5	Crystal (Type 2&3) Marshall (Type 2)	400×400	200×75
6	5	118	108	79	0.5	Crystal t(Type 2&3) Marshall (Type 2)	400×400	200×75

-Installation plates with dimensions of 300 x 300 can be produced exclusively.
 -The diameters provided are nominal and the poles diameter tolerance is -3 to +1.
 -The weight tolerance of the poles is 10%.

7 to 12 pole

Height (m)	Top section height (m)	Bottom section height (m)	Nominal Thickness (mm)	External diameter of top section (mm)	External Diameter of Bottom section (mm)	Weight of top section (Kg)	Weight of Bottom section (Kg)	Total Weight (Kg)	Top Cap Weight (Kg)	dimension of the door opening (mm)	Overlap size (mm)	Frame Type
7	1	6	5	118	125	18	90	108	0.5	200×85	300	Royal (type 1&2) Marshall (type 1)
8	2	6	5	118	125	31	90	121	0.5	200×85	300	Royal (type 1&2) Marshall (type 1)
9	3	6	5	118	125	44	90	134	0.5	200×85	300	Royal (type 1&2) Marshall (type 1)
10	4	6	5	118	125	57	90	147	0.5	200×85	300	Royal (type 1&2) Marshall (type 1)
11	5	6	5	118	125	70	90	160	0.5	200×85	300	Royal (type 1&2) Marshall (type 1)
12	6	6	5	118	125	79	90	169	0.5	200×85	300	Royal (type 1&2) Marshall (type 1)

-The diameters provided are nominal and the poles diameter tolerance is -3 to +1.
 -The weight tolerance of the poles is 10%.

Other Street lighting products (High mast, Flag-pole and Camera pole)

In addition to lighting poles, other types of equipment like Light tower for use in parks, parkings, factories, stadiums, etc., flag poles with different heights, camera poles, Traffic signs and telecommunications equipment are provided by Hanyco. The specifications of the products currently available in this group are as follows.



Ductile Iron High Mast

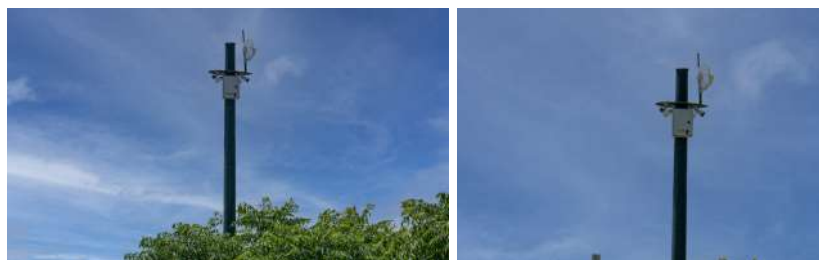
Height (m)	No. of Sections	Bottom Diameter (mm)	Top Diameter (mm)	Nominal Thickness (mm)	Pole Weight (Kg)	Max Diameter of basket (mm)	*Weight of basket (kg)	Basket type	Elevator type	Installation mode	Buried Depth (mm)	Height from ground level (m)	Door Opening dimension (mm)
18	3	421.2	187.9	5	989	1930	191	Moveable	motor	burial	2400	15.5	800×300

-This product is offered with zinc coating and polyurethane coating and with color according to customer's request. Also, on the Burial part of these poles, zinc coating, polyurethane coating and Butan paint coating are applied.

-The height, diameter of the basket, lifting system and etc. can be provided in other types and Sizes according to the customer's order.

-*The approximate weight of the basket along with 8 low-power 150-watt projectors has been calculated, and the weight of each projector is 6.7kg.

-The weight of the basket without the projector is 140 kg.



Ductile iron Camera pole

Height (m)	No. Sections	Bottom Diameter (mm)	Top Diameter (mm)	Nominal Thickness (mm)	Weight (Kg)	Installation mode	Frame height (mm)	Frame weight (kg)	Buried Depth (mm)	Height from ground level (m)	Base plate dimension (mm)
6	1	275	188	5	155	Foundation or burial	900	95	1200	4.8	150×150
12	2	348	188	5	359	Burial	-	-	1800	10.2	-
18	3	421	188	5	675	Burial	-	-	2400	15.5	-

Other heights are also available. For more information please contact us.



Ductile iron Flag Pole

Height (m)	No. Sections	Bottom Diameter (mm)	Top Diameter (mm)	Nominal Thickness (mm)	Weight (Kg)	Elevator type	Installation type	Buried Depth (mm)	Height from ground level (m)
18	3	421	188	5	675	manual	buried	2400	15.5
12	2	348	188	5	359	manual	buried	1800	10.2

Other heights and electric lift system can also be provided. For more information please contact us.

Ductile Iron lighting poles in burial mode

Another feature of ductile cast iron lighting poles is the possibility of using them as a burial due to their very high inherent corrosion resistance and strong protective coatings applied on the pole. Various types of corrosion-resistant external coatings apply on the burial and above ground surface of lighting poles. Zinc coating and polyurethane paint apply on the above-ground surface of lighting poles. Besides, zinc coating, polyurethane paint, and bituminous paint applied on the surface of burial surface of lighting poles. Special cable entry is designed for burial-type lighting poles that make end-users capable to use this product most efficiently. The presence of various protective coatings on the body of the poles guarantees their long life. The advantage of these poles is not having a foundation, reducing the cost and time of installation, as well as acceptable strength.

These poles can be produced in two types with and without decorative frames. The decorative frame is added to burial poles only to increase the beauty of the product and does not affect the performance of them. The location of these frames is on the ground and does not need an installation plate. In Hamon Naizeh company, burial poles with decorative frames can be provided in sizes of 6 to 10 meters along with Royal 1, 2 and Marshall 1 frames. For more information, please contact the experts of Hamoun Nyzeh company.



Height of above ground (m)	Buried depth (mm)	Total height (mm)	Top section height (mm)	Bottom section height (mm)	Top section weight (mm)	Bottom section weight (mm)	Total weight of pole (Kg)	Opening door dimension (mm)	Cable entry dimension (mm)	Frame type
1	800	1800	1800	0	25	0	25	200×75	150×50	
2	800	2800	2800	0	37	0	37	200×75	150×50	
3	1000	4000	4000	0	52	0	52	200×75	150×50	
4	1000	5000	5000	0	64	0	64	200×75	150×50	
5	1000	6000	6000	0	77	0	77	200×75	150×50	
6	1200	7200	1400	6100	19	90	109	200×85	150×50	Marshall 1 Royal 1&2
7	1500	8500	2700	6100	35	90	125	200×85	150×50	Marshall 1 Royal 1&2
8	1500	9500	3700	6100	47	90	137	200×85	150×50	Marshall 1 Royal 1&2
9	1700	10700	4900	6100	62	90	152	200×85	150×50	Marshall 1 Royal 1&2
10	1700	11700	5900	6100	76	90	166	200×85	150×50	Marshall 1 Royal 1&2

-The weight tolerance of the poles is 10%.

-It should be noted that for burial lighting poles that are ordered with a frame, the weight of the desired frame mentioned in this catalog must also be added to the weight declared for the desired burial pole in this table.

Standards

- 1-BS EN 40-1: "Lighting columns- Part 1: Definitions and terms", 1992.
- 2-BS EN 40-2: "Lighting columns- Part 2: General requirements and dimensions", 2004.
- 3-BS EN 40-3-1: "Lighting columns- Part 3-1: Design and Verification-Specification for characteristic loads", 2013.
- 4-BS EN 40-3-2: "Lighting columns- Part 3-2: Design and Verification-Verification by testing", 2013.
- 5-BS EN 40-3-3: "Lighting columns- Part 3-3: Design and verification- Verification by Calculation", 2013.



Sales Office: No.28, 3rd st., Shaghayegh blvd.,
Kashani ave. Tehran 1483877631 Iran

Tel.: +98 21 44009811-13
Fax.: +98 21 44009610
Email: Sales@hanyco.net
Web.: www.hanyco.ir

w w w . h a n y c o . i r
b e h r o o z i a n @ h a n y c o . n e t



HANYCO
HAMOUN NYZEH CO.